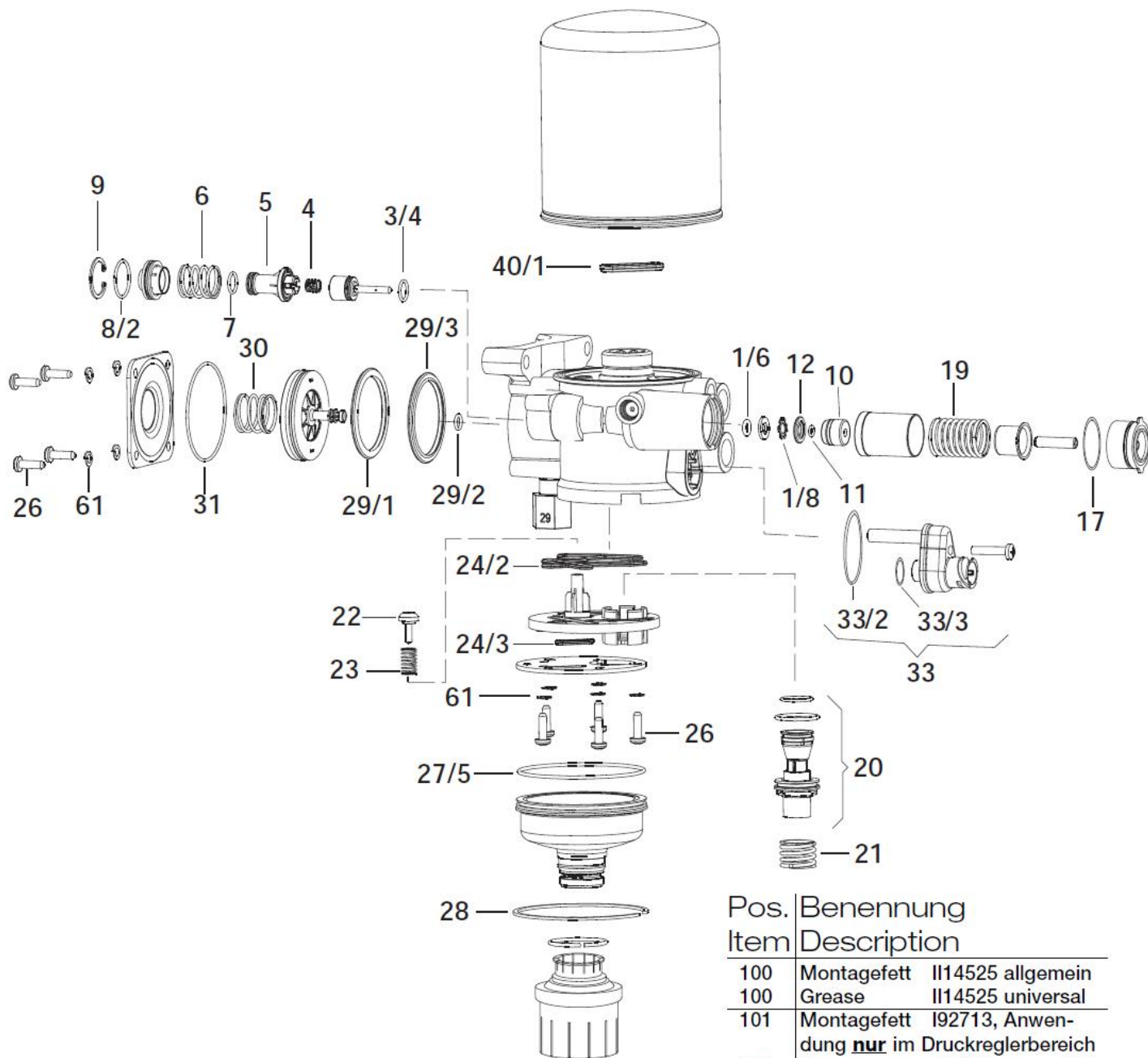


# Opravná sada K000390008



Pos. Item	Benennung Description
100	Montagefett II14525 allgemein
100	Grease II14525 universal
101	Montagefett I92713, Anwendung <b>nur</b> im Druckreglerbereich
101	Grease I92713, use <b>only</b> in the area of the Pressure Regulator

61	Federring Lock Washer	9
29/1	Knorr-K-Ring	1
29/2	O-Ring 6 x 2 (D <sub>i</sub> x d)	1
29/3	O-Ring	1
	Führungsring Guide Ring	1
40/1	O-Ring 33 x 5 (D <sub>i</sub> x d)	1
33/3	O-Ring 37 x 2 (D <sub>i</sub> x d)	1
33/2	O-Ring 5,3 x 1,8 (D <sub>i</sub> x d)	1
31	O-Ring 73 x 2 (D <sub>i</sub> x d)	1
30	Druckfeder 30 x 39 (D <sub>a</sub> x L <sub>0</sub> ) Compression Spring	1
28	Sprengring Circlip	1
27/5	O-Ring 94 x 2,5 (D <sub>i</sub> x d)	1
26	Zylinderschrauben Cheese-Head Srew	9
24/3	Dichtung Gasket	1
24/2	Dichtung Gasket	1
23	Druckfeder 11,8 x 24 (D <sub>a</sub> x L <sub>0</sub> ) Compression Spring	1
22	Ventilkegel Valve Cone	1
21	Druckfeder 27,8 x 40 (D <sub>a</sub> x L <sub>0</sub> ) Compression Spring	1
20	Ablassventil Drain Valve	1
19 <sup>1)</sup>	Druckfeder (siehe Tabelle) Compression Spring (see table)	1
18	Sicherungsring Circlip	1
17	O-Ring 30 x 2 (D <sub>i</sub> x d)	1
12	Knorr-K-Ring	1
11	O-Ring 5 x 2 (D <sub>i</sub> x d)	1
10	Kolben Piston	1
9	Sicherungsring Circlip	1
8/2	O-Ring 26 x 2 (D <sub>i</sub> x d)	1
7	O-Ring 13 x 2 (D <sub>i</sub> x d)	1
6	Druckfeder 25,4 x 42,5 (D <sub>a</sub> x L <sub>0</sub> ) Compression Spring	1
5	Kolben Piston	1
4	Druckfeder 9,7 x 16,7 (D <sub>a</sub> x L <sub>0</sub> ) Compression Spring	1
3/4	O-Ring 13 x 2 (D <sub>i</sub> x d)	1
1/8	Zackenring Tooth-Ring	1
1/6	O-Ring 5 x 2 (D <sub>i</sub> x d)	1
Pos. Rep.	Benennung Désignation	Stück Qté.